

COMMUNITY FORESTRY MANAGEMENT PLAN



MIDDLE TOWNSHIP, NJ 2010 – 2015

Prepared By:

**MJS Forestry Consultants,
Galloway, NJ**

October, 2010

Table of Contents

| | <u>PAGE</u> |
|--|--------------|
| I. MUNICIPAL INFORMATION FORM | 1 |
| II. INTRODUCTION | 2 |
| III. COMMUNITY OVERVIEW - PAST, PRESENT, AND FUTURE | 4 |
| IV. COMMUNITY FORESTRY PROGRAM ADMINISTRATION | 6 |
| V. COMMUNITY MAP | Appendix 'B' |
| VI. TRAINING PLAN | 8 |
| VII. PUBLIC EDUCATION/AWARENESS/OUTREACH | 9 |
| VIII. STATEMENT OF TREE BUDGET | 11 |
| IX. STATEMENT OF PLAN IMPLEMENTATION | 11 |
| X. COMMUNITY STEWARDSHIP INCENTIVE PROGRAM | 16 |
| XI. SOURCE DOCUMENTS | 17 |
| XII. APPENDICES | |
| Appendix: 'A' – Township Shade Tree Ordinance | 19 |
| 'B' - Community Map | 20 |

Community Forestry Management Plan

MUNICIPAL/COUNTY INFORMATION FORM

Municipality Middle Township, NJ

County Cape May

Address 33 Mechanic Street, Cape May Courthouse, NJ 08210

Contact Name and Title Bonita Millard, Chairman, Shade Tree Commission

Phone # 609-465-8722

Fax # and E-mail mtregistrar@middletownship.org

Organization Name Middle Township Shade Tree Commission

Mayor/County
Freeholder's Signature _____

Date of Management
Plan Submission _____

Time Period Covered in
Management Plan 2010 to 2015

Community
Stewardship Incentive
Program (CSIP)
Practices Identified in
Management Plan

- CSIP #1 Plan Preparation
- CSIP #2 Training
- CSIP #3 Public Education and Awareness
- CSIP #4 Arbor Day Activities
- CSIP #5 Assessment/Inventory
- CSIP #6 Tree Hazard Identification Plan
- CSIP #7 Tree Planting
- CSIP #8 Tree Maintenance
- CSIP #9 Tree Recycling
- CSIP #10 Ordinance Establishment
- CSIP #11 Tree Care Disaster Plan
- CSIP #12 Insect and Disease Management
- CSIP #13 Other

Official Use
Only
Certification

The above named municipality/county has made formal application to the New Jersey Forest Official. I am pleased to advise you that after our review, the NJ Forest Service has concluded that this plan meets the standards set forth by the State and the NJ Community Forestry Council and is approved for the period covered.

Signed _____

State Forester

Approved date _____

MIDDLE TOWNSHIP COMMUNITY FORESTRY MANAGEMENT PLAN

I. MUNICIPAL INFORMATION FORM (see page 1)

II. INTRODUCTION

A. Plan Scope:

The scope of this plan is to provide the Township of Middle municipal government, especially those involved in the care of the Community Forest, direction & guidance based on the "New Jersey Shade Tree and Community Forestry Assistance Act" of 1996.

Once approved by the NJ State Forestry Service, following the provisions of this Plan provides the Township of Middle a number of positive benefits, such as enabling "...communities to reduce or eliminate their exposure to litigation due to the drastic decline and poor condition of the community tree resource." Following an Approved Plan also opens avenues to tree-related grant funding not available otherwise.

B. Mission Statement

To identify, evaluate, improve, and promote Middle Township's Community Forest for the benefit of its citizens.

C. Goals & Objectives

1. **Develop a Community Forest Management Plan that provides a vision for Middle Township's Community Forest and offers direction for decision-making.**
 - a. Complete Community Forestry Management Plan and to have it approved by the NJ Community Forestry Council in 2010.
2. **Assess the size, location, condition, and importance of the community forest resource.**
 - a. Inventory historical and other specimen trees within the Township.
 - b. Conduct a high-level inventory of Middle Township's community trees along streets, as well as other publicly-owned shade trees on school properties, in Parks, and active recreation areas.
 - c. Inventory hazard trees on Township property, including public road rights-of-way.
3. **Implement plans to maintain and improve the community forest resource.**
 - a. Continue removing and mitigating hazard trees through the use of the Township's existing Public Works Department resources and a new hazard tree inventory.
 - b. Develop a systematic public tree maintenance program utilizing existing Public Works Department resources and outside resources as available.

MIDDLE TOWNSHIP COMMUNITY FORESTRY MANAGEMENT PLAN

- c. Replace hazard tree removals, where feasible, by planting trees in suitable locations. Develop a tree planting plan for plantings in other suitable areas as well.
 - d. Standardize enforcement of existing tree protection ordinances. Alert residents to ordinance requirements and methods to report violations.
- 4. Involve the Community in the planning, care of, and enjoyment of the community forest.**
- a. Continue and expand annual Arbor Day programs in Township schools.
 - b. Increase resident awareness of Middle Township's community forest resources through various media and public events.
 - c. Increase community group involvement in tree inventory, maintenance, planting, training, and public outreach activities.
 - d. Hold semi-annual tree sales to Township residents, with appropriate species and training.
 - e. Working with appropriate Township commissions and departments, incorporate elements of this Plan into the Middle Township Master Plan.

D. Liability Statement

Although community trees are an asset to Middle Township, it is inevitable that they mature and require care, maintenance, and replacement. Care and maintenance, in addition to planting "the right tree in the right place" help ensure that community trees not only contribute to the environmental and economic vitality of the area, but also reduce their potential hazards to public safety. Our community must work within a reasonable budget that may not be able to meet each and every need of our Community Forest, or objective in this Plan, immediately. Therefore, it is the intent of this plan to focus available resources to the greatest need, and work step-by-step towards a healthy forest with commensurate reduced risks to public safety.

We feel that by taking logical steps outlined in the Plan, we will garner public support for plan implementation and demonstrate the long-term benefits to the environment and public safety. We also want to become more pro-active in the management and care of our Community Forest. Through inventory and hazard assessment, we will position Middle Township to take corrective action prior to structural tree failure and other hazardous tree-related conditions. It is acknowledged that not all hazardous conditions will be predicted. Good maintenance and care will reduce the probability, but unexpected events will occur.

Following this plan will demonstrate that Middle Township is devoting reasonable levels of resources, in a planned manner, to reduce the number of tree-related accidents and thereby its exposure to liabilities, and increase public safety.

III. COMMUNITY OVERVIEW – PAST, PRESENT, AND FUTURE

A. History of Middle Township and its Community Forest

Middle Township was formed as a precinct in 1723, and was incorporated as one of New Jersey's initial 104 townships by an Act of the NJ Legislature in 1798. At the time, "... it encompassed an area of approximately ten miles long and ten miles wide". The eventual incorporation of the Wildwoods, Avalon, and Stone Harbor reduced the Township's size to about 70 square miles.

Settlers first came to the eastern portion of the Township as whalers in the early 1700's, and later moved from the islands to the mainland as permanent residents. The towns along the western portion of the Township are located along early Lenni Lenape paths and camping sites. During the Revolutionary War and the War of 1812, this area was a favorite landing spot for British raiding parties. This area made its notoriety in the shipbuilding and lumbering industries, and flourished during the 19th century.

B. State of Middle Township's Community Forest

According to the United States Census Bureau, the township has a total area of 83.1 square miles (215.3 km²), of which, 71.3 square miles (184.6 km²) of it is land and 11.8 square miles (30.6 km²) of it (14.23%) is water. In 2002, approximately 16% of the Township land was forested, while 51% was wetlands, and 17% was bodies of water.

Middle Township borders Dennis Township, Sea Isle City, Avalon Borough, Stone Harbor Borough, North Wildwood City, Wildwood City, West Wildwood Borough, Lower Township, the Atlantic Ocean, and the Delaware Bay.

According to the 2000 census, there were 16,405 people residing in Middle Township. An estimate of 2006 population suggests a slight (0.2%) decline in population over six years.

Middle Township is a mixture of rural and suburban areas, with residential and commercial development surrounding a township center, Cape May Courthouse. Most of the community forest is scattered among the agricultural and residential areas, along with publicly-owned street trees limited to Cape May Courthouse, Whitesboro, Goshen, Rio Grande, and along Rt. 9. As such, most community trees are not planted or cultivated, but are part of the Township's woodlands. As the community matures, however, a community forest in need of attention is developing; in Parks, along streets, and places where development is replacing wooded area with cultivated trees.

Middle Township lies completely outside of the NJ Pinelands Management Area, and therefore is not subject to the provisions of the Pinelands Comprehensive Management Plan.

A significant portion of the Township is regulated by CAFRA (Coastal Areas Facilities Review Act), a state law that encourages growth within existing centers and discourages growth with more stringent regulations outside these centers. CAFRA has

MIDDLE TOWNSHIP COMMUNITY FORESTRY MANAGEMENT PLAN

regulations requiring specific tree cover for certain land use categories, making these regulations of interest to the Middle Township Shade Tree Commission.

Middle Township is fortunate in having an established Shade Tree Commission. Among its duties are to protect and manage the Township's Community Forest resources – its trees and woodlands – for the benefit of the residents. Also, they provide Mayor, Council, and Township government advice on any tree-related issues. This body handles requests for tree planting, tree maintenance, and removal.

The main resource at the Shade Tree Commission's disposal is the Public Works Department, who has the manpower, equipment, and expertise to perform tree planting, dead and hazardous tree removal, some tree pruning, wood and leaf recycling, etc. There is no funding currently available in any Township Department or Commission's budget for other needs such as tree inventories, insect and disease management, training, etc.

Challenges faced by the Township regarding the Community Forest include the multiple stresses their Community Forest has faced from Southern Pine Bark Beetle, drought, and flooding. This has led to a large amount of dead and dying trees on both public and private properties.

Among their successes as a Township are the many trees planted – over 300 within the last decade. Their work is most visible at the Goshen Recreation Complex along 'Memory Lane', and in Whitesboro at the Rec Center. The Shade Tree Commission wants to continue this trend, and wants to also follow up on these planted trees to make sure they are thriving.

C. Middle Township Master Plan Linkage to Community Forest Management Plan

Middle Township has a Master Plan, adopted by Mayor and Committee in 2010. Middle Township Master Plan lays out goals, among them to:

"Protect the quality of the environment such as groundwater resources and wetlands and cooperation with organizations that promote the same."

"Encourage the conservation of the area's natural resources including water supply and open spaces."

"Provide measures to retain and preserve existing natural vegetation during new construction."

These are important goals for the future of the Community Forest in Middle Township. However, there were no action items regarding tree planting, maintenance, or hazard tree mitigation mentioned in the 2010 Master Plan. Once the Community Forestry Management Plan is approved and in place, the Shade Tree Commission should make a serious effort to have the CFMP incorporated into the next version of the Master Plan, so more consideration of the Community Forest is considered, allowing some of the important Master Plan goals to be met.

MIDDLE TOWNSHIP COMMUNITY FORESTRY MANAGEMENT PLAN

D. Open Space Plan Linkage to Community Forest Management Plan

Middle Township does not have an Open Space Plan.

See Appendix 'A' for a copy of Middle Township Tree Ordinance Chapter 66, General Code, enabling the Shade Tree Commission and detailing its responsibilities.

IV. COMMUNITY FORESTRY PROGRAM ADMINISTRATION

A. Person or Group Responsible for Carrying Out Community Forestry Management Plan

The Shade Tree Commission is the 'umbrella' body that is responsible for trees and community forest resources in Middle Township, and will be responsible for carrying out the goals and objectives set out in this Plan. The Shade Tree Commission is made up of five members, all volunteers. The Shade Tree Commission is answerable to the Mayor directly.

The following are the current members, and their titles:

Bonita Millard, Chairman & Secretary

Leatrice Westcott

Jim Collins, Public Works Advisor & member

Ted Paul

Sue Conrad

Public Works Supervisor: Andrew Smith

NOTE: This is the organization named on the Municipal Information Form.

B. Key City Departments/Personnel Responsible for Oversight or Management of Middle Township's Community Forest

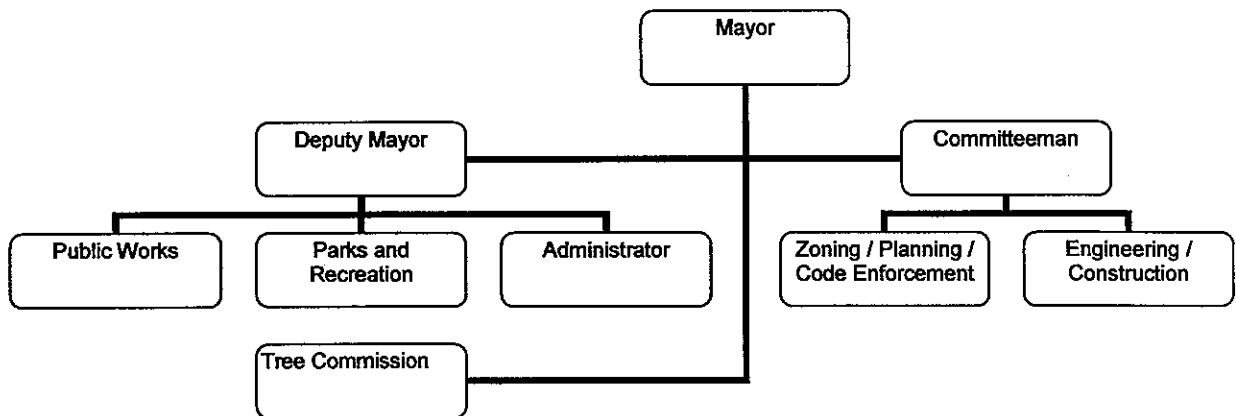
The Supervisor of Public Works reports directly to the Deputy Mayor. The Public Works Roads Department is responsible for any actual maintenance, removal, and planting of trees in the Township on public property. This department has a number of resources available to perform most aspects of tree care internally. The Deputy Mayor is also responsible for the Shade Tree Commission.

The Finance Office and Chief Financial Officer are responsible for all Purchasing and Contract Services procurement. The Construction Office is responsible for tree protection and mitigation on all construction projects within the Township.

MIDDLE TOWNSHIP COMMUNITY FORESTRY MANAGEMENT PLAN

The Shade Tree Commission is involved with providing advice on site plan reviews, tree planting, enforcement of the Shade Tree Ordinance, and expert advice on environmental issues, including trees & forests, to other departments. The Shade Tree Commission is also responsible for tree-related public outreach and is environmental liaison with the Township schools.

MIDDLE TOWNSHIP ORGANIZATION CHART (tree-related)



C. Tree Request Process

When a resident calls into the Middle Township Municipal Complex with a tree request or concern, their request is routed to the Shade Tree Commission. The request is field inspected by a member of the Shade Tree Commission to determine the condition of the tree(s), and to determine what type of work may be necessary. If work is necessary, it is forwarded to the Township Public Works Department. A Public Works Roads Department crew is dispatched and appropriate action is taken. Typical activities may include tree removal, deadwood removal, debris clean up, crown elevating for vehicle access, etc. The Middle Township Public Works Department is equipped to handle most of this type of tree maintenance work, and its workers are trained in safe work practices. If electric utility facilities are involved, the Public Works Department does not do the work, but refers the problem to the local electric utility. Finally, the Public Works Department personnel do periodic informal hazard tree 'windshield surveys' and address any problems found.

D. Contracting of Tree Maintenance, Planting and Other Management Activities

Middle Township may, at its discretion, contract out portions of its tree-related construction, maintenance, and management activities such as tree planting, tree pruning/removal, landscaping, project supervision, consulting, etc. Factors affecting this decision may include the size or seasonal nature of a project, the availability of the Township's personnel and equipment, the availability of internal expertise; safety concerns, project funding source, work rules, etc.

V. COMMUNITY MAP see Appendix 'B'

VI. TRAINING PLAN

Training regarding all aspects of trees, community forests, and related issues is needed as part this Community Forestry Plan's implementation. The subject matter, detail, and intensity depend on what level of involvement individuals will have in the future of the community forest. Training can be formal or informal, depending again upon involvement. Suggested training may include, but is not limited to:

A. Mayor, Council, and Related Department Heads

1. Information session on the benefits of compliance with the ' NJ Shade Tree & Community Forestry Assistance Act', especially liability protection;
2. Information session on the need for, issues surrounding, and implementation of a Community Forest Management Plan;
3. Overview of benefits of NJ Community Forestry Council Training and Accreditation Program.

This can be accomplished at a regular meeting of the Shade Tree Commission, or can be a more formal presentation by NJDEP State Forestry Service representatives or the Shade Tree Commission's Forestry Consultant.

B. Shade Tree Commission Members

1. Attendance and successful completion of NJ Community Forestry Council Training and Accreditation Program (Core Training). This eight-hour program gives participants an overview of the NJ Shade Tree and Community Forestry Assistance Act, background on community forestry and shade tree commissions, legal aspects of managing trees, and recognition of hazardous situations. It must be attended by a minimum of two persons representing Middle Township; one a municipal official, and one a commission member, board member, or volunteer from the community.
NOTE: This requirement has been met by Township, as of this writing.
2. Attendance at approved tree-care educational programs to update knowledge and obtain Continuing Education Units (CEU's), in order to stay accredited by the NJ Community Forest Council. Any two individuals involved with the Township's community forests (city employees and/or volunteers) may attend programs to obtain CEU's. Priority training topics suggested for Middle Township include, but are not limited to: tree inventories, hazard tree identification, tree maintenance and scheduling, trees and utilities, successful tree planting, and tree & facility conflicts (also see list below).

(Note: Fulfillment of the above-mentioned training requirements is critical to the Township's ability to continue compliance with the NJ Shade Tree and Community Forestry Assistance Act, and thus maintain the liability protection and other benefits it affords.)

MIDDLE TOWNSHIP COMMUNITY FORESTRY MANAGEMENT PLAN

C. Public Works Department Superintendent, Supervisors, Crews

1. Tree identification;
2. Hazard tree identification;
3. Proper tree pruning concepts and application;
4. Tree Planting;
5. Insect & disease identification and control (integrated pest management).

D. Shade Tree Commission / Construction Office / Other Volunteers

1. Tree identification;
2. Tree inventories and hazard tree identification;
3. Proper tree pruning concepts and application;
4. Tree Protection on Construction Sites;
5. Tree identification and biology;
6. Insect & disease identification and control (integrated pest management);
7. Tree selection and planting; and
8. Trees and utilities

VII. Public Education/Awareness/Outreach

A. Community Involvement, Use of Volunteers and the Media – Past & Current Activities

The Shade Tree Commission sponsors an Essay Contest for Grade School students on the importance of trees. The winner received a free tree for their use. Brochures about tree planting and tree care, as well as pencils with Shade Tree Commission contact information, have been produced and distributed to Township residents using various means. Local Boy Scouts have worked with the Shade Tree Commission on various projects.

B. Community Involvement, Use of Volunteers and the Media – Future Activities

This Plan proposes to continue and expand the efforts currently being undertaken by the Shade Tree Commission. It is anticipated that once this Community Forest Management Plan is approved by the State, the following public education/outreach programs are suggested:

MIDDLE TOWNSHIP COMMUNITY FORESTRY MANAGEMENT PLAN

1. Encourage the celebration of Arbor Day (in New Jersey, the fourth Friday in April each year) for all Township schools and schoolchildren; include media, city officials, volunteers, and the public in meaningful, visible tree planting ceremonies or dedications. Arbor Day is a significant rallying point around which to spin off other public awareness initiatives.
2. Amplify the benefits, importance, and awareness of the Community Forest through local media, both print and electronic.
 - a. Advertise Shade Tree Commission meetings and activities, encouraging interested volunteers to be a part of the process.
 - b. Add Community Forestry and Shade Tree Commission information to the Township's web site, with links to various other tree care organizations – International Society of Arboriculture, National Arbor Day Foundation, NJ State Forest Service Community Forestry bulletin board, etc.
 - c. Give interviews to local print news outlets and local access cable television stations regarding Community Forestry, get video and print coverage of events such as Arbor Day, park openings, etc.
 - d. Utilize Township newsletter to raise public awareness on tree hazards, the benefits of trees, 'right tree, right place' tree planting, etc. Use these to advertise Shade Tree Commission meetings, Arbor Day, and the Township Tree Ordinance.
3. Meet and work with other interested community organizations to share information and resources and coordinate efforts for mutually beneficial projects (i.e., Master Gardeners, Boy Scouts/Girl Scouts of America, Garden Club, local civic groups, etc.).
4. Work with Middle Township Schools and interested teachers at all levels on projects, creating awareness of the benefits of the Community Forest. Utilize students as volunteers for projects such as hazard tree surveys, tree inventories, or tree planting.
5. Begin work towards qualifying the Township for the National Arbor Day Foundation's "Tree City USA" Award Program. This program provides widespread recognition to municipalities that care for their Community Forests, and is a great resource for free and low-cost promotional/educational materials as well. Once recognized by the Foundation, the Township could display its award with road signs at Township entrances, flags, and a plaque, all provided by this organization.
6. Through appropriate Commissions and Departments, work towards linking this Community Forest Management Plan with Township Master Plan. This will integrate the need to maintain and improve the Community Forest with the Township's other core needs identified in the Master Plan. This can be accomplished while the Master Plan is going through its periodic updating.

MIDDLE TOWNSHIP COMMUNITY FORESTRY MANAGEMENT PLAN

VIII. Statement of Middle Township Tree Budget (2010)

A. Department of Public Works Roads Department

Salary and Wages (including benefits): 6 employees
(including Supervisor), 25% of time on tree-related work (approx.) **\$70,000**

Equipment: Bucket Truck, chipper (maintenance, fuel, etc.) **\$10,000**

B. Environmental Commission:

Operating Funds **\$1,000**

In-kind Volunteer Hours: Meetings - 192 hours @21.25/hour **\$2,550**

Outside Consultant **\$3,000**

TOTAL MIDDLE TOWNSHIP TREE BUDGET, 2010 \$86,550

IX. Statement of Plan Implementation

Below are listed short and long-term action plans for fulfilling the goals of this Community Forestry Management Plan. As this Management Plan has been developed to cover a five-year period, short-term implementation plans are to be considered and acted upon within the next one to two years, while long-term is to be considered three to five years.

A. Year 1, November 2010 to October 2011

1. Obtain Approval of Final Draft of Community Forest Management Plan (CFMP) from Township Mayor and Committee.
2. Obtain approval of Community Forestry Management Plan by State of New Jersey DEP.
3. Determine area of responsibility for Community Forest – ownership of trees on public property or public right-of-way. Determine responsibility for the care of these trees.
4. Conduct informational session with Township Committee. Inform them of benefits of Approved Community Forestry Plan and next steps based on Implementation Plan.
5. Train Public Works Superintendent, Public Works Department Supervisor and crews in hazard tree identification and assessment, and code enforcement

MIDDLE TOWNSHIP COMMUNITY FORESTRY MANAGEMENT PLAN

officials in tree protection on construction sites. Training is available from various sources:

- a. Rutgers University / Cook College Continuing Education
 - b. NJDEP State Forestry Service Urban and Community Forestry Program
 - c. NJ Arborists, Chapter International Society of Arboriculture
 - d. Committee for the Advancement of Arboriculture
 - e. USDA Forest Service
6. Implement a 'windshield survey' hazard tree assessment of Township public trees on streets and in active recreation parks. Incorporate data into inventory discussed below. Utilize Public Works crews to perform tree removals. Perform pruning for hazard mitigation and truck clearance as necessary.
 7. Conduct a sample tree inventory/hazard tree assessment of a defined area (1-5% of road mileage) chosen by the Shade Tree Commission. This inventory should be very basic in scope, utilizing current skills and technology capabilities of data collectors. Inventory to collect includes data such as species, location, size, health, hazard trees, specific maintenance needs, insect and disease problems, potential tree planting locations, etc.
 - a. Level of detail collected and sample size to be at discretion of Shade Tree Commission, depending on labor available, expertise, etc.
 - b. Area to be chosen initially can be one neighborhood that has a special need, is unique, or contains specimen trees.
 - c. Inventory to be implemented using Shade Tree Commission members, Public Works employees, volunteers, and/or other outside consultant.
 8. Develop a Tree-Planting plan for Township.
 - a. Develop specifications for tree planting, utilizing NJ Shade Tree Federation's "Trees for NJ Streets" (latest edition) and other available publications.
 - b. Develop a tree species guide for Township tree planting, utilizing information from various sources including current Township ordinance, NJ Shade Tree Federation, NJ State Forest Service, USDA Extension Service, etc.
 - i. Determine appropriate tree species for resident's use, as well as plant sources and funding, in anticipation of semi-annual Shade Tree Commission Tree Sale.
 - c. Implement tree planting.
 - i. Apply for State Tree Planting grants through NJDEP State Forestry Service CSIP Program or other available sources.

MIDDLE TOWNSHIP COMMUNITY FORESTRY MANAGEMENT PLAN

- ii. Determine appropriate locations for planting trees, keeping with criteria established by above-mentioned Plan and funding available. Locations may be Township entrances, parks, schools, or other Township property. A specific location to focus on may be the Whitesboro Rec Center.
 - iii. Hire contractor(s) for 2010-2011 planting; implement planting, monitor results and follow-up with contractor.
9. Promote Importance of Community Forest to residents.
- a. Implement Arbor Day programs in elementary, middle, and/or high school by:
 - i. Obtaining and distributing free seedlings to students (from NJDEP State Tree Nursery);
 - ii. Running a poster/essay contest on the importance of trees (winner going to state-wide contest).
 - iii. Plant tree or trees on school property, with student involvement, government official presence, and media coverage.
 - b. Advertise Shade Tree Commission meetings and activities in local newspaper, Township newsletter, and on local access cable programming (if available).
 - c. Begin work on applying for "Tree City USA" designation.
 - i. Download application from National Arbor Day Foundation (NADF) website;
 - ii. Determine which criteria Middle Township already complies with, and which criteria remains to be met.

B. Year 2, November 2011 to October 2012

- 1. Inventory second section of Township, to be determined by Shade Tree Commission, utilizing methodology developed the previous Plan year. Hazard tree assessment is made an integral part of overall inventory. Hazard trees are sorted out and forwarded to Public Works to re-inspect and take action on.
- 2. Data from second inventory is combined with first year's data and sorted, with data being evaluated to look for other maintenance trends, needs, and opportunities.
- 3. Using data from inventory to show need, apply for NJDEP State Forestry Service CSIP grant funding for long-term tree maintenance.
- 4. Develop a Township 'Heritage Tree' List, identifying historically significant, unique, or large size trees throughout the Township. These trees can be the focus of

MIDDLE TOWNSHIP COMMUNITY FORESTRY MANAGEMENT PLAN

existing tree protection ordinance, Arbor Day activities, historical research, and maintenance activities for Shade Tree Commission and other interested groups.

5. Utilizing the above-mentioned tree species guide and funds from Township, Green Communities grant, or other sources, advertise and implement semi-annual Tree Sale throughout Township.
6. Continue Arbor Day activities in schools, involving Shade Tree Commission members, other Township departments, as well as Mayor & Committee.
7. Continue to promote Shade Tree Commission activities, including through Township newsletter articles and website. Set up an informational booth at Earth Day events, MUA collection points, etc.; distribute Shade Tree Commission brochures and other information at these, and advertise semi-annual Tree Sale.
8. Collect data and approvals; apply for "Tree City USA" designation.
9. Continue to obtain CEU's from the NJDEP State Forestry Service for Shade Tree Commission members and Public Works employees. This is critical to obtaining grant funding and staying compliant with the New Jersey Shade Tree and Community Forestry Assistance Act.
10. Fill out and send Township's 'Annual Accomplishment Report, a one page document required by the NJDEP Forest Service to maintain compliance with the terms of the "NJ Shade Tree and Community Forestry Assistance Act". This gives a summary of your previous year's Plan accomplishments.

C. Year 3, November 2012 to October 2013

1. Inventory third section of Township, to be determined by Shade Tree Commission. Hazard trees are sorted out and forwarded to Public Works to re-inspect and take action on. Volunteers from Master gardeners or other groups are solicited, trained, and utilized.
2. Long-term maintenance program begins, including pruning of street trees, trees in active recreation parks, and around schools and other public buildings. Pruning is performed by trained Public Works employees, and if funding allows, with contracted tree care services. Pruning locations and objectives to be determined by inventory data. Apply to NJDEP State Forest Service for CSIP Grant funding for tree maintenance funding to expand work that Public Works already performs.
3. Continue Arbor Day activities in schools. Hold local poster contest in conjunction with statewide poster contest theme, with winner going to NJ state competition. Winner of Middle Township contest is seen in local newspapers, on Township website, and poster is copied to use to promote Township tree programs.
5. As appropriate, continue Township semi-annual resident 'Tree Sale'. Sale to include some take-home instructions on how to plant a tree, and possible follow-up as part of Tree Inventory.

MIDDLE TOWNSHIP COMMUNITY FORESTRY MANAGEMENT PLAN

6. As a new Tree City USA recipient, make sure that the Mayor and Committee also take part in the award ceremony at the NJ State Arbor Day. Advertise award; use NADF-supplied signs at key Township entranceways, such as along the State Routes 9, 47, and 83, and local and county entranceways into the Township. Display Tree City USA plaque and flag at Township offices or Public Works building.
7. As the Master Plan is likely due for updating, meet with appropriate Commissions and Departments to work towards linking this Community Forestry Management Plan with these long-term planning documents.
8. Fill out and send Township's required Annual Accomplishment Report, send to NJ State Forest Service.

D. Year 4, November 2013 to October 2014

1. Inventory fourth section of Township, to be determined by Shade Tree Commission. Hazard trees are sorted out and forwarded to Public Works to re-inspect and take action on.
2. Maintenance program continues, including pruning of street trees, trees in active recreation parks, trees planted around schools and other public buildings. Pruning locations and objectives to be determined by inventory data.
3. Continue Arbor Day activities in schools, and get tree-related pieces into various community newsletters and township website.
4. Assure that the requirements are met again to continue receiving the Tree City USA Award, and application is sent in to the National Arbor Day Foundation in a timely manner.
5. As appropriate, continue Township semi-annual resident 'Tree Sale'. Sale to include take-home instructions on how to plant a tree, and possible follow-up as part of Tree Inventory.
6. Continue to obtain CEU's from the NJDEP State Forestry Service for Shade Tree Commission members and Public Works employees.
7. Continue to meet with appropriate Commissions and Departments to work towards linking this Community Forestry Management Plan with the Master Plan.
8. Fill out and send Township's required Annual Accomplishment Report, send to NJ State Forest Service.

E. Year 5, November 2014 to October 2015

1. Inventory fifth section of Township, to be determined by Shade Tree Commission, utilizing established method from previous years. Hazard trees are sorted out and forwarded to Public Works to re-inspect and take action on.

MIDDLE TOWNSHIP COMMUNITY FORESTRY MANAGEMENT PLAN

2. Arbor Day activities to become a school district-wide celebration to mark the completion of five-year plan of diligent tree care in Township, and study of trees and the environment in school.
4. Maintenance program continues, including pruning of street trees, trees in active recreation parks, and around schools and other public buildings. Pruning locations and objectives to be determined by inventory data.
5. Assure that the requirements are met again to continue receiving the Tree City USA Award, and application is sent in to the National Arbor Day Foundation in a timely manner.
6. Heritage trees that have identified for last 4 years will be submitted to State Forestry Service for consideration as 'Big' trees or as historically worthy of protection.
7. Fill out and send Township's required Annual Accomplishment Report, send to NJ State Forest Service.
8. Township to apply for "Second Five-Year Community Forest Management Plan" plan development funding begins process to become re-qualified.

X. Community Stewardship Incentive Program (CSIP)

- | | |
|---|--|
| A. CSIP # 1: Training | <i>CFMP Section VI, page 8</i> |
| B. CSIP # 2: Ordinance Establishment | <i>CFMP Section II, page 6</i> |
| C. CSIP # 3 Public Education And Awareness | <i>CFMP Section VII, page 9</i> |
| D. CSIP # 4: Arbor Day | <i>CFMP Section VII, page 9</i> |
| E. CSIP # 5: Tree Inventory | <i>CFMP Section II, page 2</i> |
| F. CSIP # 6: Hazard Tree Assessment | <i>CFMP Section II, page 2</i> |
| G. CSIP # 7: Storm Damage Assessment: | Not currently in discussion by Shade Tree Commission; training and preparation for this would allow for fast hazard mitigation after storm events, and would quantify damage for any federal or state Disaster programs. |
| H. CSIP # 8: Tree Maintenance & Removals | <i>CFMP Section II, page 2</i> |
| I. CSIP # 9: Insect and Disease Management | <i>CFMP Section III, page 5</i> |
| J. CSIP # 10: Wildfire Protection: | Not discussed, not a major concern in this Township. |
| K. CSIP # 11: Tree Planting: | <i>CFMP Section II, page 2</i> |

MIDDLE TOWNSHIP COMMUNITY FORESTRY MANAGEMENT PLAN

- L. **CSIP # 12: Tree Recycling:** Recycling is not discussed in this Plan, as the Shade Tree Commission has no authority over wood waste, leaves, and mulch, or its handling. This activity is handled solely by Public Works.
- M. **CSIP # 13: Sidewalk Maintenance Program:** Not discussed, Township does not have many tree/sidewalk conflicts.
- N. **CSIP # 14: Storm Water Management:** Not discussed
- O. **CSIP # 15: Other** No other miscellaneous subjects addressed

XI. INFORMATION SOURCES / DOCUMENTS

Cape May County, NJ website: <http://www.co.capemaycountygov.net>

Middle Township, NJ website: <http://www.middletownship.com>

"Trees for New Jersey Streets", New Jersey Shade Tree Federation, 2007

"Master Plan-Land Use Plan Update, Township of Middle...Draft 2010", May 2010 J. Maser Consulting P.A., Hamilton, NJ

"Natural Resource Inventory, Township of Middle" 2007, (Revised May 2010) Maser Consulting, P.A., Hamilton, NJ

Wikipedia website: http://en.wikipedia.org/wiki/Middle_Township,_New_Jersey

XII. APPENDICES

A. Tree Ordinance

B. Community Map

NOTE:

This document has been prepared by MJS Forestry Consultants in cooperation with, and utilizing information from, Municipal officials, Shade Tree Commission members, and publicly available sources.

This document has been created to comply with specific guidelines published by the NJDEP State Forest Service, and for the specific use of the Municipality it was prepared for.

Implementation of this Plan is the sole responsibility of said Municipality and / or Environmental Commission / Shade Tree Commission. MJS Forestry Consultants is not in any way responsible for the implementation of, or compliance with, this Community Forestry Management Plan.

M.J. Simons, MJS Forestry Consultants

557 Holly Brook Road

Galloway, NJ 08205

NJ Certified Tree Expert #367

NJAISA Certified Arborist NJ-0156

10/4/2010

APPENDIX A

Township Shade Tree Commission Ordinance

APPENDIX A:

MIDDLE TOWNSHIP, CAPE MAY COUNTY, NJ; SHADE TREE COMMISSION ENABLING ORDINANCE

CHAPTER 66 SHADE TREE COMMISSION

[HISTORY: Adopted by the Township Committee of the Township of Middle 2-3-1983 as Ord. No. 445-83. Section 66-2 amended at time of adoption of Code; see Ch. 1, General Provisions, Art. I. Other amendments noted where applicable.]

GENERAL REFERENCES

Excavations and soil removal — See Ch. 133.

Subdivision of land and site plan review — See Ch. 218.

§ 66-1 Creation.

Pursuant to N.J.S.A. 40:64-1 et seq., there is hereby created the Middle Township Shade Tree Commission.

§ 66-2 Purpose.

Editor's Note: Amended at time of adoption of Code; see Ch. 1, General Provisions, Art. I.

The purpose of the Middle Township Shade Tree Commission shall be the regulation, planting, care and control of shade and ornamental trees and shrubbery upon and in the streets, highways and public places of the Township of Middle, except state highways, unless the Department of Transportation shall assent thereto, and except county highways and parks, unless the county and/or the County Parks Commission, as the case may be, gives assent thereto.

§ 66-3 Members; residency; compensation.

[Amended 1-4-1984 by Ord. No. 470-83]

The Middle Township Shade Tree Commission shall consist of seven members appointed by the Mayor. Each member shall be a resident of the Township of Middle and shall serve without compensation.

§ 66-4 Terms of office.

[Amended 1-4-1984 by Ord. No. 470-83]

A.

The first Commissioners shall be appointed to terms in office as follows:

(1)

One member: one year.

(2)

One member: two years.

(3)

One member three years.

(4)

Two members: four years.

(5)

Two members: five years.

B.

Thereafter, each subsequent appointment, except for an appointment to fill an unexpired term, shall be for a term of five years commencing January 1 of the year of appointment.

§ 66-5 Officers.

The Commission shall annually elect one of its members as Chairman and shall appoint a Secretary, who need not but may be a member. The salary of the Secretary, if any, shall be fixed by the Township Committee.

§ 66-6 Vacancies.

Any vacancy occurring by reason of the death, resignation or removal of any Commissioner shall be filled for the unexpired term by the Mayor.

§ 66-7 Powers.

The Middle Township Shade Tree Commission shall have the following powers:

A.

To exercise full and exclusive control over the regulation, planting and care of shade and ornamental trees and shrubbery now located or which may hereafter be planted in any public highway, park or parkway, except such as are excluded pursuant to § 66-2 of this chapter, including the planting, trimming, spraying, care and protection thereof.

B.

To regulate and control the use of the ground surrounding any such shade and ornamental tree and/or shrubbery, as aforesaid, so far as may be necessary for their proper growth, care and protection.

C.

To move or require the removal of any tree or part thereof dangerous to public safety.

D.

To make, alter, amend and repeal, in the manner prescribed for the passage, alteration, amendment and repeal of ordinances by the governing body of the Township of Middle, any and all ordinances necessary or proper to the carrying out of the provisions of this chapter.

E.

To administer treatment to or remove any tree situated upon private property which is believed to harbor a disease or insects readily communicable to neighboring healthy trees in the care of the Township of Middle and to enter upon private property for that purpose, with the consent of the owner thereof, provided that the suspected condition is first confirmed by certificate issued by or on behalf of the New Jersey Department of Agriculture.

F.

To encourage arboriculture.

§ 66-8 Construal of provisions.

No statute giving any person or state, county or municipal board, body or official power or authority to lay sidewalk along any street or to open, construct, curb or pave any street or to do any similar act shall be construed to permit or authorize any interference with or injury to a highway shade tree without the consent of the Shade Tree Commission of Middle Township. In all such cases, the Shade Tree Commission shall reasonably cooperate with such person, board, body or official for the general public good. Nothing contained in this chapter shall be deemed to diminish or remove any of the powers or authority of the Cape May County Parks Commission over the trees or shrubbery in the Cape May County Parks.

§ 66-9 Allocation of funds.

A.

During the month of December in each year, the Middle Township Shade Tree Commission shall certify to the Township Committee of the Township of Middle the estimated sum necessary for the proper conduct of its work during the ensuing fiscal year, which shall include the sums estimated to be expended for such of the following items as it is anticipated expenditure will be made for:

(1)

The payment of wages and salaries of employees.

(2)

The expenses of Commission members in discharging official duties, including expenses incident to attendance at professional meetings.

(3)

The purchase of trees and shrubbery.

(4) The purchase of necessary equipment and materials and costs of services for the prudent promotion of the general work.

B.

The Township Committee of the Township of Middle shall, in its sole discretion, determine the amount to be allocated to the Shade Tree Commission for the coming year and shall, in its sole discretion, appropriate such sums as it may deem necessary for said purposes.

§ 66-10 Adoption of ordinances.

The Commission may prescribe a fine for violation of its ordinances in an amount not exceeding \$200 for each violation, and the Municipal Court of the Township of Middle shall have jurisdiction over actions for the violation of such ordinances, and said ordinances shall be enforced by like proceedings and process as that provided by law for the enforcement of ordinances for the Township of Middle. The officers authorized by law to serve and execute process for the Municipal Court of the Township of Middle shall be the officers to serve and execute any process issued out of the Municipal Court for violations of the ordinances of the Commission. A copy of any ordinance of the Middle Township Shade Tree Commission, certified to under the hand of its Secretary or Chairman, shall be received in any court of this state as full and legal proof of the existence of the ordinance and that all requirements of law in relation to the ordaining, publishing and making of the same, so as to make it legal and binding, have been complied with, unless the contrary is shown.

§ 66-11 Disposition of moneys.

All moneys collected, either as fines or penalties, for any violation of a rule or regulation of the Middle Township Shade Tree Commission or as a charge against real estate, under any provision of this chapter, shall be forthwith paid over to the custodian of the municipal funds.

§ 66-12 Filing of regulations.

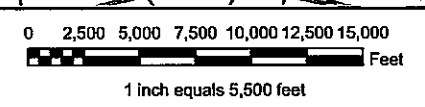
All regulations adopted by the Middle Township Shade Tree Commission shall be filed with the Municipal Clerk for inspection by the public during regular business hours.

APPENDIX B

Middle Township Map



| Land Use / Land Cover | |
|---|---|
| --- Municipal Boundaries | High Density Residential |
| --- Garden State Parkway | Medium Density Residential |
| --- State Roads | Low Density Residential |
| --- County Roads | Rural Density Residential |
| --- Local Roads | Commercial / Services |
| --- Railroads | Industrial |
| --- Water Bodies | Mixed use |
| ■ Athletic Fields (School) | ■ Cemetery |
| ■ Transportation / Communications / Utilities | ■ Military Installations |
| ■ Recreational Lands | ■ Stadium / Theater / Cultural Center / Zoo |
| ■ Other Urban Lands | ■ Agriculture |
| ■ Beaches | ■ Forest |
| ■ Forested Wetlands | ■ Wetlands |
| ■ Barren Lands | ■ Extractive Mining |



THIS MAP WAS DEVELOPED USING CAPE MAY COUNTY AND NJDEP DIGITAL DATA. THIS SECONDARY PRODUCT HAS NOT BEEN VERIFIED AND IS NOT COUNTY OR STATE AUTHORIZED.

2002 LAND USE / LAND COVER

TOWNSHIP OF MIDDLE
CAPE MAY COUNTY NEW JERSEY



APRIL 2007

W:\projects\1616 - hydro\State\New Jersey\County\Cape May County\MUNICIPAL\Middle_Twp\06010406LULC.mxd